

FILE NO.

REV: REVISIONS DWN CHK APP

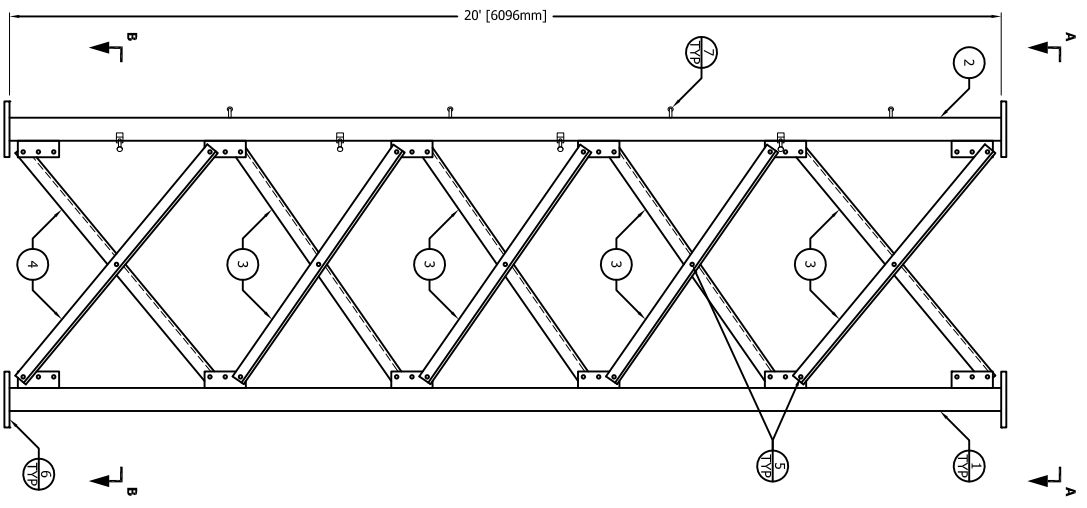
REV	DESCRIPTION	JHR	CTL	HA
4	REWORK			
DATE: 10/17/2013				

SECTION ASSEMBLY P/N: 6N6

BILL OF MATERIAL

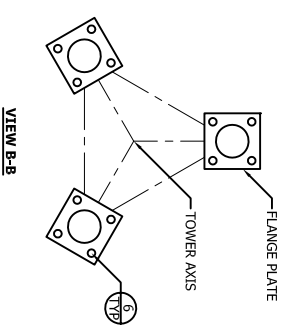
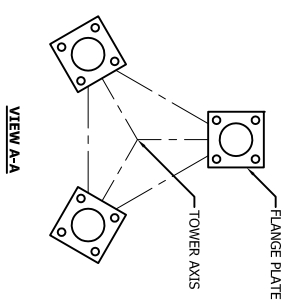
ITEM	PART NO.	QTY	DESCRIPTION
1	VL71	2	LEG SSV 6-7N 2STD 20" 5 5 S9 [PIPE 51mm STD]
2	VL715	1	LEG SSV 6-7N 2STD 20" 5 5 S9 [PIPE 51mm STD]
3	6NB	24	BRACE DS S565 L1.5X.13X5.57" [L 38X38X3]
4	6NC	6	BRACE DS S565 L1.5X.13X5.43" [L 38X38X3]
5	210017GA	75	BOLT ASSY 1/2" X 1-1/4 HSB A325 [M13x32]
6	210033GA	12	BOLT ASSY 5/8" X 2-1/2 HSB A325 [M16x64]
7	5/8STEP	16	BOLT ASSY STEP 5/8X7 W/D8N [M16x178]

- GENERAL NOTES:**
- LEG PART NUMBER IS STAMPED AT THE BOTTOM OF EACH LEG AND MUST BE LOCATED AT THE BOTTOM OF THE SECTION FOR PROPER ASSEMBLY.
 - STEP BOLTS ARE PROVIDED ON ONE LEG ONLY.
 - FLANGE BOLTS ARE FOR FLANGE PLATES AT THE BOTTOM OF THE SECTION.
 - DRAWING IS IN I.S. AND IS FOR ASSEMBLY PURPOSES ONLY.
 - NOMINAL METRIC EQUIVALENTS ARE GIVEN FOR REFERENCE ONLY AND SHALL NOT BE SUBSTITUTED FOR THE DESCRIBED SIZES UNLESS OTHERWISE APPROVED BY ROHN PRODUCTS.



ELEVATION VIEW

FLANGE	OFFSET	BEVEL	FLANGE PLATE (P/N)	SPREAD
TOP	N/A	N/A	5" X 5" X 3/4" (P/N: 5A)	4-6 1/4" [1378mm]
BOTTOM	N/A	N/A	5" X 5" X 3/4" (P/N: 5A)	4-6 1/4" [1378mm]



PO BOX 5999
 PEORIA, IL 61601-5999
 TOLL FREE 800-77-ROHN
 THIS DRAWING IS THE PROPERTY OF ROHN. IT IS NOT TO BE REPRODUCED, COPIED OR TRACED IN WHOLE OR IN PART WITHOUT OUR WRITTEN CONSENT.

**SECTION ASSEMBLY
 DETAILS FOR SSV 6N6**

OWN: AED	CHKD: WDU	DATE: 10/17/1978
ENGR: TS	SHEET #: 1 OF 1	
PRL ENGR: OH	PRL MNGR:	
DRAWING NO: A780207	REV: 4	